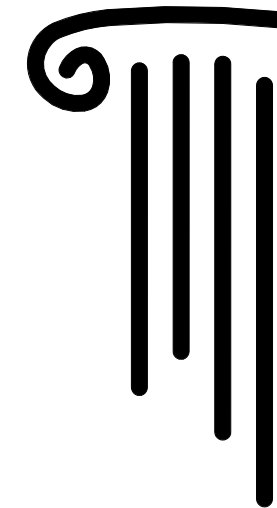


1 SITE PLAN - AWNING OVERHANGS  
3/16" = 1'-0"



Bob Thomas,  
NCARB  
btncarb@yahoo.com

30418 Briarcrest Dr.  
Georgetown, TX 78628  
512-635-0621



HERITAGE COURT  
BUILDING  
200 E. 8th St.  
Georgetown, TX

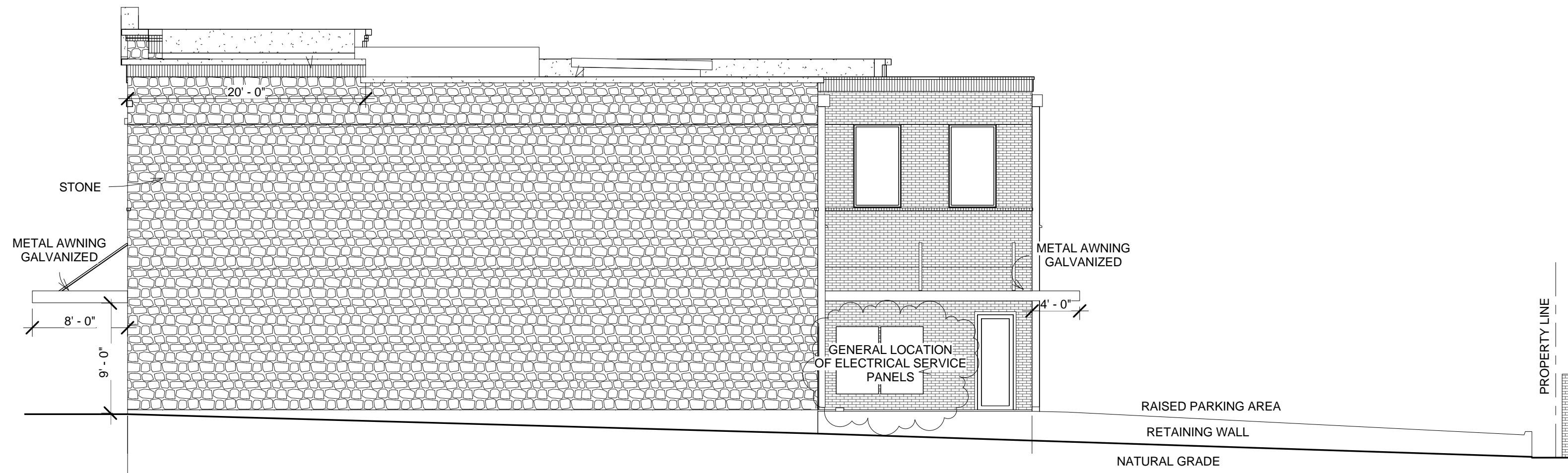
Permit Issue Date:  
7-31-19

Revisions		
No.	Date	Description
1		
2		
3		
4		

File: WS-DE  
Scale: 3/16" = 1'-0"  
By: SRE  
Date: 7-31-19

Sheet Name  
AWNINGS PLAN

Sheet No.  
A11



② SOUTH (SIDE) ELEVATION  
1/8" = 1'-0"



① CHURCH ST. (FRONT) ELEVATION  
3/16" = 1'-0"

AWNING ENCROACHMENT NOTES:

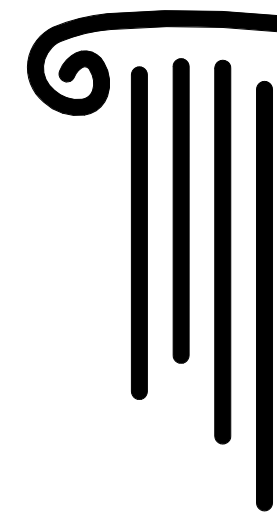
A2.1.1 - AWNING ALONG 8TH ST. (LEFT SIDE ELEVATION) EXTENDS OVER SIDE PROPERTY LINE BY 8' - 0"

A2.1.2 - AWNING ALONG CHURCH ST. (FRONT ELEVATION) EXTENDS OVER FRONT PROPERTY LINE BY 8' - 0"

HORIZONTAL ARTICULATION CALCULATIONS FOR FOOTPRINT - CHURCH ST FACADE					
Average Bldg. Ht.	33.3	ft. x 3	99.9	ft. max. distance w.o. perpendicular offset	120
Average Bldg. Ht.	33.3	ft. x 25%	8.325	ft. min. ht. of perpendicular offset	9
Average Bldg. Ht.	33.3	ft. x 75%	24.975	ft. min. span of perpendicular offset	40
VERTICAL ARTICULATION CALCULATIONS FOR ELEVATIONS - CHURCH ST FACADE					
Average Bldg. Ht.	33.3	ft. x 3	99.9	ft. max. distance w.o. vertical elevation change	120
Average Bldg. Ht.	33.3	ft. x 25%	8.325	ft. min. ht. of vertical elevation change	10.5
Average Bldg. Ht.	33.3	ft. x 75%	24.975	ft. min. lateral elevation change	40

THE EXTERIOR DESIGN AND HEIGHT OF THE BUILDING APPROVED VIA COA-2018-029 BY THE HISTORICAL AND ARCHITECTURAL REVIEW COMMISSION ON JULY 24, 2018

EXTERIOR FINISHES	
NAME	DESCRIPTION
BRICK	REDLAND BRICK - TANGERINE SMOOTH
BRICK CORNICE	MERIDIAN BRICK - ATHENS ARCH. V104
STONE	MERIDIAN BRICK - WHITE CHOP LIMESTONE
CORNICE/BANDING	AMERICAN ARTSTONE 78-05
TRIM/METAL	GALVANIZED - POLISHED METAL



Bob Thomas,  
NCARB  
btncarb@yahoo.com

30418 Briarcrest Dr.  
Georgetown, TX 78628  
512-635-0621



HERITAGE COURT  
BUILDING  
200 E. 8th St.  
Georgetown, TX

Permit Issue Date:  
11-01-18

Revisions

No.	Date	Description

File: WS-DE

Scale: As indicated

By: SRE

Date: 7-01-19

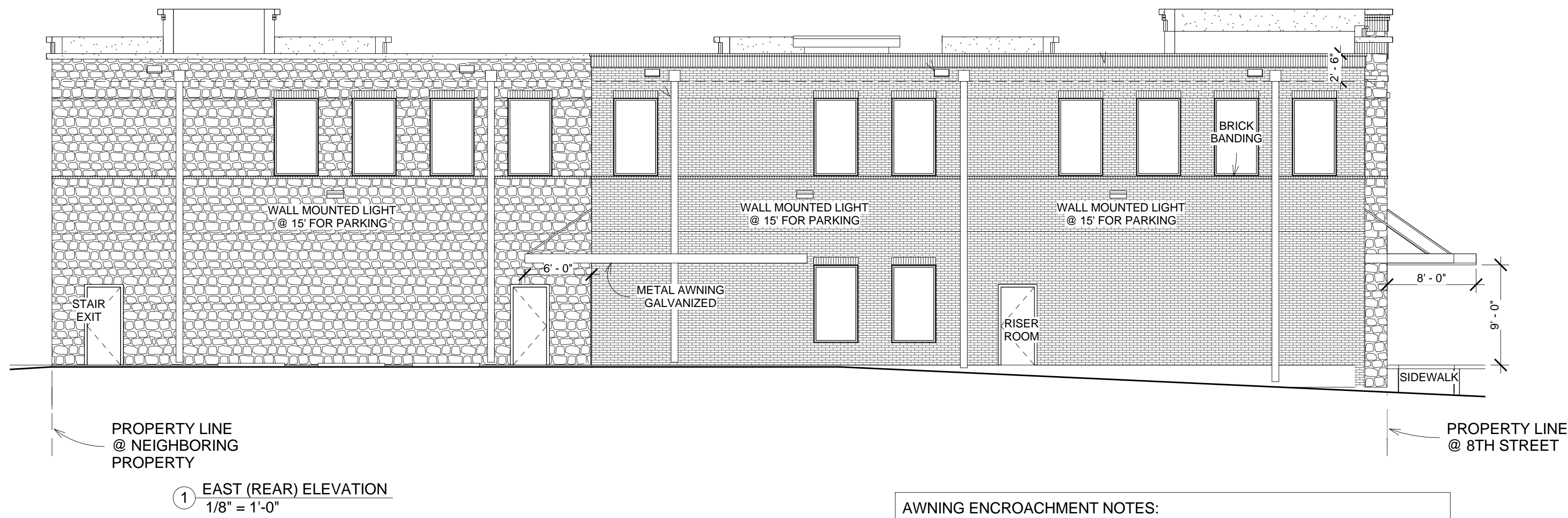
Sheet Name

CHURCH &  
SOUTH  
ELEVATIONS

Sheet No.

A2.1





AWNING ENCROACHMENT NOTES:

A2.2.1 - AWNING ALONG 8TH ST. (LEFT SIDE ELEVATION) EXTENDS OVER SIDE PROPERTY LINE BY 8' - 0"

A2.2.2 - AWNING ALONG CHURCH ST. (FRONT ELEVATION) EXTENDS OVER FRONT PROPERTY LINE BY 8' - 0"

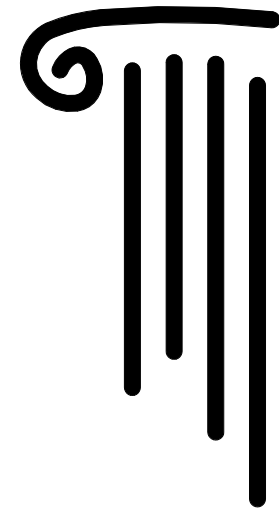


ALL BUILDING SIGNAGE IS BEING APPLIED AND APPROVED SEPARATELY

THE EXTERIOR DESIGN AND HEIGHT OF THE BUILDING APPROVED VIA COA-2018-029 BY THE HISTORICAL AND ARCHITECTURAL REVIEW COMMISSION ON JULY 24, 2018

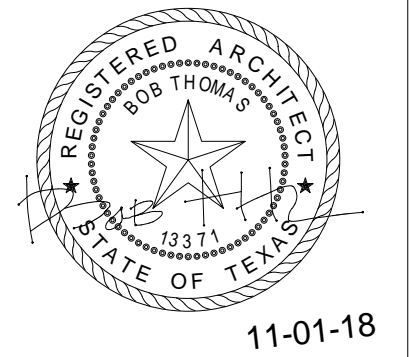
EXTERIOR FINISHES	
NAME	DESCRIPTION
BRICK	REDLAND BRICK - TANGERINE SMOOTH
BRICK CORNICE	MERIDIAN BRICK - ATHENS ARCH. V104
STONE	MERIDIAN BRICK - WHITE CHOP LIMESTONE
CORNICE/BANDING	AMERICAN ARTSTONE 78-05
TRIM/METAL	GALVANIZED - POLISHED METAL

HORIZONTAL ARTICULATION CALCULATIONS FOR FOOTPRINT - 8th ST FAÇADE						
Average Bldg. Ht.	33.3	ft. x 3	99.9	ft. max. distance w.o. perpendicular offset	76	ft. actual distance of longest wall
Average Bldg. Ht.	33.3	ft. x 25%	8.325	ft. min. ht. of perpendicular offset	17.5	ft. actual perpendicular offset
Average Bldg. Ht.	33.3	ft. x 75%	24.975	ft. min. span of perpendicular offset	26	ft. actual span of perpendicular offset
VERTICAL ARTICULATION CALCULATIONS FOR ELEVATIONS - 8th ST FAÇADE						
Average Bldg. Ht.	33.3	ft. x 3	99.9	ft. max. distance w.o. vertical elevation change	76	ft. actual distance of longest wall
Average Bldg. Ht.	33.3	ft. x 25%	8.325	ft. min. ht. of vertical elevation change	10.5	ft. actual perpendicular offset
Average Bldg. Ht.	33.3	ft. x 75%	24.975	ft. min. lateral elevation change	26	ft. actual span of perpendicular offset



Bob Thomas,  
NCARB  
btncarb@yahoo.com

30418 Briarcrest Dr.  
Georgetown, TX 78628  
512-635-0621



HERITAGE COURT  
BUILDING  
200 E. 8th St.  
Georgetown, TX

Permit Issue Date:  
11-01-18

Revisions		
No.	Date	Description

File: WS-DE  
Scale: As indicated  
By: SRE  
Date: 7-01-19

Sheet Name  
8TH & EAST  
ELEVATIONS

Sheet No.

A2.2